



HANGARS



GARAGES



DISTRIBUTION COMPANIES



HARBOURS



WORKSHOPS



SWIMMING POOLS

ACCESSOIRES

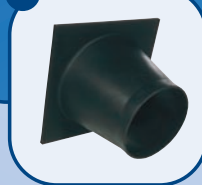
ACCESSOIRES

Vinyl Cover

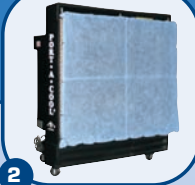
PAC-CVR-02
PAC-CVR-01
PAC-CVR-03
PAC-ACC-01
PAC-ACC-30
PAC-ADP-16
PUMP-0150-1
PUMP-016-4R
CASTER-KIT-02
PAC-FRAME
PAC-FILTER
MK-47-CS

Cover for 16" Unit
Cover for 36" and 24" Unit
Cover for 48" Unit
Mobile water tank (190 L) ,24" , 36" , 48"
Movable frame for 16"
Adapter for 16" to hose
Pump 220 V for 16"
Pump 220 V 24,36,48"
Set of 4
Units 16, 24, 36, 48"
Spares
6 water treatment bottles

1



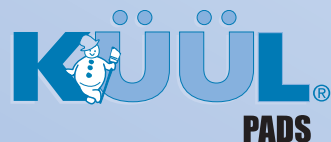
2



3



4



KÜÜL® PADS

Omschrijving	Pads per unit	Article number
48" Port•a•cool®-unit	6	PAD6060
36" Port•a•cool®-unit	5	PAD6048
24" Port•a•cool®-unit	4	PAD6036
16" Port•a•cool®-unit	3	PAD6024

36" PNEUMATIC UNIT explosion-proof

Air yield	258 m3/min
Transport frame	Steel
Water reservoir	75.5 l
Dimensions	1.65 m x 1.60 m x 1.09 m
Weight	160 kg
Transport weight	209 kg
Transport dimensions	1.98 m x 1.85 m x 1.22 m

LIFE'S COOL

EUROPE

C/ Diputación 475 bajos
08013 Barcelona
Tel: +34.93.2312810 • Fax: +34.93.2311476
info@lc-europe.com • www.lc-europe.com

LIFE'S COOL

EUROPE



16" AND 24" MODELS



16" UNIT SPECIFICATION

Air yield	93 m3/min
Ventilator motor	0.37 KW/220V/1.7 A
Pump	0.11 KW/220V/0.46 A
Water reservoir	11.5 l
Dimensions	0.78 m x 0.95 m x 0.56 m
Weight	29 kg
Transport weight	33.6 kg
Transport dimensions	0.80 m x 0.97 m x 0.58 m
Cooling capacity	75 m2

84 LITRES 16"

Air yield	93 m3/min
Ventilator motor	0.22 KW/220V/2.25 A
Pump	0.11 KW/220V/0.46 A
Water reservoir	80 l
Dimensions	1.5 m x 0.95 m x 0.56 m
Weight	52.2 kg
Transport weight	65.9 kg
Transport dimensions	1.52 m x 0.99 m x 0.61 m
Cooling capacity	75 m2



24" UNIT SPECIFICATION

Air yield	190 m3/min
Ventilator motor	variable 0.22 KW/220V/2.25 A
Pump	0.11 KW/220V/0.46 A
Water reservoir	53 l
Dimensions	1.35 m x 1.27 m x 0.64 m
Weight	70.4 kg
Transport weight	81.8 kg
Transport dimensions	1,40 m x 1.27 m x 0.66 m
Cooling capacity	167 m2



36" AND 48" MODELS



36" UNIT SPECIFICATION

Air yield	286 m3/min
Ventilator motor	variable 0.37 KW/220V/3.15 A
Pump	0.11 KW/220V/0.46 A
Water reservoir	75.5 l
Dimensions	1.70 m x 1.57 m x 0.81 m
Weight	92.8 kg
Transport weight	111.2 kg
Transport dimensions	1.72 m x 1.62 m x 0.84 m
Cooling capacity	246 m2

48" UNIT SPECIFICATION

Air yield	481 m3/min
Ventilator motor	0.75 KW/220V/4.35 A
Pump	0.11 KW/220V/0.46 A
Water reservoir	94,6 l
Dimensions	2.18 m x 1.88 m x 0.92 m
Weight	156.6 kg
Transport weight	188.5 kg
Transport dimensions	2.24 m x 1.90 m x 0.94 m
Cooling capacity	325 m2



APPLICATIONS

- Industry • Hire firms • Catering • Automotive • Garages
- Tyre companies • Quick service • Factories • Halls • Storage depots
- Transhipment depots • Chemical industry • Explosion-resistant units
- Kennels • Stables, riding schools • Construction companies
- Welding workshops • Turning shops • Construction • Technical department
- Tennis courts • Clubhouses • Golf courses • Swimming pools
- Amusement parks • Hangars • Baggage handling • Glasshouses
- Auction rooms • Dry cleaning

THE PROPERTIES AND BENEFITS

PORT•A•COOL®

Movable air coolers with evaporation system

PROPERTIES:

- Durable housing made from polyethylene cast from one piece.
- Water supply via a hose.
- Flexible placement options.
- The unit and the water tank are both movable.
- Operating costs are just a fraction of those of traditional air-conditioning.
- Years of carefree, convenient use and practically maintenance-free.
- Environmentally-friendly due to efficient and effective energy consumption.
- Available with ventilators in four sizes: ventilator blades with diameters of 48", 36", 24" and 16".



BENEFITS:

- Works in locations in which traditional air-conditioning is not available, impractical or too expensive.
- Generates an average drop in ambient temperature of 7° C.
- The most advanced movable evaporation cooling system there is.
- Extremely low energy consumption: works using tap water and electricity or compressed air.
- Does more than displace hot air: the Port•a•cool® emits 'real' cool air.
- Easy to use, maintenance-friendly and easy to clean.
- A Port•a•cool®-unit and accessories enables you to cope effectively with hot weather for an affordable price.
- Offers effective high-quality air cooling for very low operating costs.



ADVANTAGES:

- Increases productivity by creating a more pleasant working climate.
- Turns a working environment where air-conditioning is not available or too expensive into a space in which people can work to the best of their abilities.
- Can also be used as movable, temporary replacement equipment if the usual cooling system is out of operation.
- Also suitable to keep machines cool which might become damaged by overheating.



Port•a•cool®-units are:

- environmentally-friendly – do not produce any fluorocarbons like traditional air-conditioning units or vapour compression systems. Using Port•a•cool®-units instead of vapour compression systems also helps to reduce the emission of CO2, CFCs and other greenhouse gases.
- energy-efficient – if everyone were to use evaporation-based air cooling systems instead of air-conditioning systems based on vapour compression, this would generate a saving of around 60 million tons of oil and drastically reduce CO2 emissions.
- good for air quality. The ingenious structure and placement method of the Küül® pads filter contaminations out of the circulating air, meaning that the air emitted is not only a lot colder but also a lot cleaner.
- easy to integrate. Port•a•cool® units can be easily incorporated, as an energy-efficient addition, into an existing system.
- available in a range of sizes. Electrical Port•a•cool® units are available in four sizes, pneumatic models in three sizes and there are also two models for dangerous locations.
- cheap to use. The fact that the energy consumption is so much lower than in the case of traditional air-conditioning results in more efficient energy management.
- COOL! On average, Port•a•cool®-units reduce ambient temperature by 7° C, because they actually expel cold air!

